

FALL 2016 SYLLABUS

GEOG 803.002 SEMINAR IN NATURE_SOCIETY:

LANDSCAPE



Tuesdays 3:30-6:30

Hanes Art 116

Instructor: Dr. Scott Kirsch, Department of Geography, UNC-Chapel Hill

Office: CH 306 Office hours: W 1-3 F 2-3; or by appt.

course homepage: via <https://sakai.unc.edu/> email: kirsch@email.unc.edu

Overview

Whether understood as a place, polity, natural setting, painting, or pleasant view, a historically-produced way of seeing or a spectacle produced to-be-seen, *landscape* has persisted as a compelling category across the arts and sciences as a means of “holding things together” in representational practices engaging with local settings. Drawing on the 1980s “new cultural geography,” historical-geographical materialism, science & technology studies, art history, political ecology and cultural studies, this graduate seminar will use the lens of landscape, and related issues of space, place, and representation, to engage contemporary issues of materiality, environmental transformation and change.

The seminar brings together conceptual, practical, and methodological engagements with landscape research. It will be organized around three overlapping themes, each drawing from a key set of disciplines and traditions: (1) landscape as representation (cultural geography); (2) the production of landscape (historical-geographical materialism); and (3) landscapes that matter (geography and STS). In addition to reading, analysis, and discussion of texts, the course includes a number of short collaborative projects, some involving additional site visits, tours, short readings, and research in which students are asked to participate.

Requirements

- Close reading and discussion of texts. Participants will take turns leading discussions.
- Project participation – ~ 3-4 short collaborative exercises and projects, carried out over 1-2 week periods during the semester, will require some additional writing and research, including short responses, library and archive research, and creative uses of mapping and new media.
- A term paper, in which students are encouraged to examine aspects of their own graduate research projects in relation to course themes, will be developed throughout the semester; due in hard copy at the last class session. Alternately, students may choose to write two short review or “concept” papers, or to expand their work on the collaborative projects.

- Plan to read ~75-125 pages per week for regular seminar meetings.
- Grades:

Seminar participation	50%
Projects	25%
Term Paper	25%

Key Texts

Denis Cosgrove, *Social Formation and Symbolic Landscape* (Madison: University of Wisconsin Press, 1998 pbk edn). Available: bookstore.

Donna Haraway, *Staying with the Trouble: Making Kin in the Chtuhulucene* (Durham: Duke University Press, 2016). Available: September 16 @ bookstore*

Don Mitchell, *They Saved the Crops: Labor, Landscape and the Struggle Over Industrial Farming in Bracero-Era California* (Athens: University of Georgia Press, 2012). Available: bookstore and library e-copy:
<http://site.ebrary.com/lib/uncch/detail.action?docID=10555736>

Schedule

Texts refer to Cosgrove (DC), Haraway (DH), or Mitchell (DM) (above) or references below – pdfs and/or links will be provided on sakai

I. INTRODUCTION: MAKING SPACE FOR LANDSCAPE

1. Aug 23 Introductions
2. Aug 30 The idea of landscape
 - DC, Introduction (1-12); Ch. 1: The idea of landscape (13-38)
 - DM, Introduction (1-13)
 - W.J.T. Mitchell, "Imperial landscape" in *Landscape and Power* (Chicago: University of Chicago Press, 1994), 5-34.
 - Donna Haraway, "A manifesto for Cyborgs: Science, technology, and socialist feminism in the 1980s" *Australian Feminist Studies* 2:4(1987): 1-42.
 - countercartographies.org. "KickOutTheKKK" (map) <http://www.countercartographies.org>
 - UNC University Libraries, A guide to resources about UNC's Confederate monument <http://exhibits.lib.unc.edu/exhibits/show/silent-sam/about>

II. LANDSCAPE & REPRESENTATION: CULTURAL GEOGRAPHY

3. Sep 6 Ways of seeing
 - Peirce Lewis, "Axioms for reading the landscape: Some guides to the American scene" in D. Meinig (ed), *Interpreting Ordinary Landscapes: Geographic Essays* (New York: Oxford University Press, 1979), 11-32.
 - DC, Ch. 2: Landscape and social formation (39-68)
 - John Berger, "Ways of Seeing" BBC Television (1972);
 - Watch: Episode 1: https://www.youtube.com/watch?v=OpDE4VX_9Kk
 - Watch: Episode 3: <https://www.youtube.com/watch?v=Z7wi8jd7aC4>
 - Gillian Rose, "Rethinking the geography of cultural 'objects' through digital technologies: Interface, network and friction" *Progress in Human Geography* 40(2016): 334-351.
 - Raymond Williams, "Representative" in *Keywords: A vocabulary of culture and society*, revised edn. (New York: Oxford University Press, 1983), 266-269.
 - Exhibitions:
 - Ackland Art Museum, UNC-Chapel Hill, "All about America: Photographs by Burk Uzzle" 24 June - 11 September 2016 <http://ackland.org/exhibition/burk-uzzle/>
 - and/or:
 - Nasher Museum of Art, Duke University, "Burk Uzzle: Southern landscapes" May 28 – September 18 2016 <http://nasher.duke.edu/exhibitions/uzzle/>

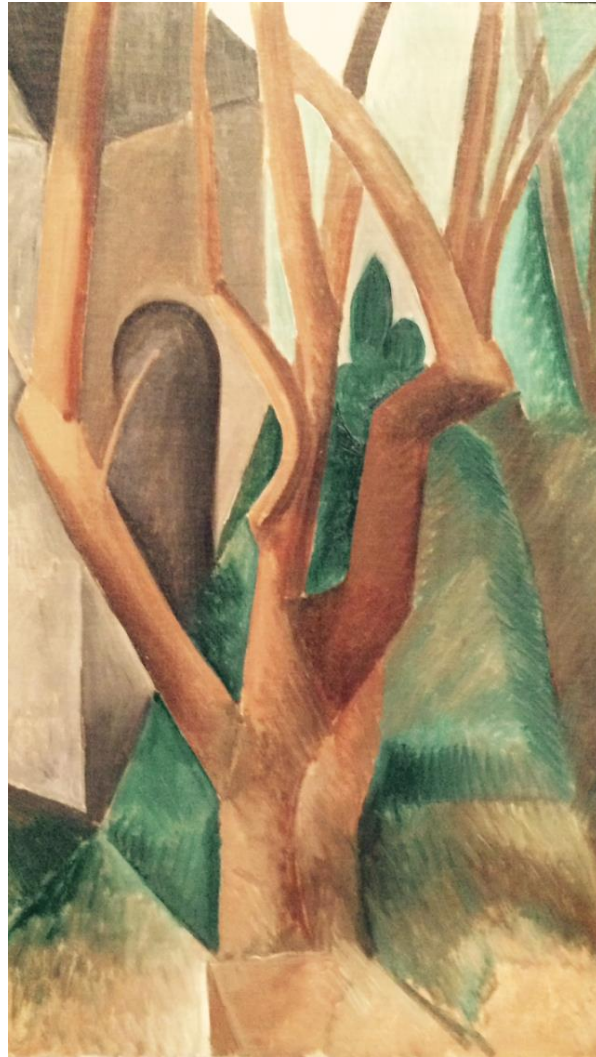
4. Sep 13 The “new cultural geography”
- DC, Ch. 3: Landscape in Renaissance Italy (69-101)
 - Stephen Daniels, “Marxism, culture, and the duplicity of landscape” in R. Peet and N. Thrift (eds) *New Models in Geography*, Vol. 2. (Unwin Hymen, 1989), 196-220.
 - Denis Cosgrove and Peter Jackson, “New directions in cultural geography” *Area* 19(1987): 95-101
 - Catherine Nash, “Reclaiming vision: looking at landscape and the body” *Gender, Place and Culture: A Journal of Feminist Geography* 3.2 (1996): 149-170.
 - Kenneth Olwig, Introduction and chapter one, *Landscape, Nature and the Body Politic* (University of Wisconsin Press, 2002) xxiii-42.
5. Sep 20 Picturing landscape
- DC, Ch. 4: Venice, the Veneto and sixteenth-century landscape (102-141)
 - Veronica della dora, “Topia: Landscape before linear perspective” *Annals of the Association of American Geographers* 103(2013): 688-709.
 - Olwig, *Landscape*, Ch 2 “Country and landscape” (43-61)
 - Kathryn Yusoff and Jennifer Gabrys, “Time lapses: Robert Smithson’s mobile landscapes” *Cultural Geographies* 13(2006): 444-450.
 - Scott Kirsch, “Ecologists and the experimental landscape: The nature of science at the US Department of Energy’s Savannah River Site” *Cultural Geographies* 14(2007): 485-510.
 - The Living New Deal. New Deal Archive & Map: <https://livingnewdeal.org/>
6. Sep 27 Narrating landscape
- DC, Ch. 6: America as landscape (161-188)
 - Stephen Daniels and Denis Cosgrove, “Introduction: Iconography and landscape” in D. Cosgrove and S. Daniels (eds) *The Iconography of Landscape: Essays on the symbolic representation, design and use of past environments* (Cambridge University Press, 1988), 1-10.
 - Mona Domosh, “Those “gorgeous incongruities”: Polite politics and public space on the streets of nineteenth-century New York City” *Annals of the Association of American Geographers* 88(1998): 209-226.
 - John Wylie, “A single day’s walking: narrating self and landscape on the South West Coast Path” *Transactions, Institute of British Geographers* 30(2005): 234-247.
 - Fraser MacDonald, “The ruins of Erskine Beveridge” *Transactions, Institute of British Geographers* 39(2014): 477-489.
 - **Workshop #1:** Landscape and historical research; campus buildings; a “living New Deal” in North Carolina?
- III. PRODUCTION OF LANDSCAPE: HISTORICAL-GEOGRAPHICAL MATERIALISM**
7. Oct 4 Morphology
- → *Workshop #1*
 - DM, Ch. 1: The agribusiness landscape in the ‘war emergency’ (15-43); “Morphology” (44-47)
 - Raymond Williams “Labour” in *Keywords: A vocabulary of culture and society*, revised edn. (New York: Oxford University Press, 1983), 176-179.
 - Scott Kirsch “Historical-geographical materialism” in N Thrift and R. Kitchen (eds) *International Encyclopedia of Human Geography* Vol. 5: 163-168. (London: Elsevier, 2009).
8. Oct 11 Landscapes of production and reproduction
- DM, Ch. 2: The struggle for a rational farming landscape (49-69); “Reproduction” (70-73); “Scale” (96-101)
 - Henri Lefebvre, “Space: social product and use value” in *State, Space, World: Selected Essays* by Henri Lefebvre, N. Brenner and S. Elden, eds. (Minneapolis: University of Minnesota Press, 2009), 185-195.
 - Doreen Massey, “In what sense a regional problem?” *Regional Studies* 13(1979): 233-243.
 - Doreen Massey, “Landscape as a provocation: Reflections on moving mountains” *Journal of Material Culture* 11(2006): 33-48.
 - David Harvey, “Monument and myth: the building of the Basilica of the Sacred Heart”, *Annals of the Association of American Geographers* 69 (1979): 362–81.
9. Oct 18 Power and justice
- DM, “Violence” (131-133); “Determination” (166-169); “Squeezed” (198-201); “Wetback” (229-232); Ch. 8: Operation Wetback (233-256); “State” (257-259)
 - Henri Lefebvre, “Space and the state” in *State, Space, World: Selected Essays* by Henri Lefebvre, N. Brenner and S. Elden, eds. (Minneapolis: University of Minnesota Press, 2009), 223-253.

- Conor Harrison, "Extending the 'White Way': Municipal streetlighting and race, 1900-1930" *Social and Cultural Geography* 16(2015): 950-973.
 - Wendy Cheng, Laura Barraclough, and Laura Pulido, "Radicalising teaching and tourism: A People's Guide as active and activist history" *Left History* 15(2010): 111-127.
 - See Pulido *et al.*, *A People's Guide to Los Angeles*
https://books.google.com/books/about/A_People_s_Guide_to_Los_Angeles.html?id=zJ26F5KmTROC
 - Tom Mels, "The trouble with representation: landscape and environmental justice" *Landscape Research* 41(2016): 417-424.
10. Oct 25 Afterlives of landscape? Waste and value
- DM, (368-422)
 - Vinay Gidwani and R.N. Reddy, "The afterlives of 'waste': Notes from India for a minor history of capitalist surplus" *Antipode* 43(2011): 1625-1658.
 - Rebecca Solnit, "Uneven terrain: The West" in *Storming the Gates of Paradise: Landscapes for Politics* (University of California Press, 2008), 15-65.
 - Pavithra Vasudevan and William A Kearney, "Remembering Kearneytown: race, place and collective memory in collaborative filmmaking" *Area*, 2015, doi: 10.1111/area.12238, 1-8.
 - And see: <https://vimeo.com/115070233>
11. Nov 1 **Workshop #2: Working landscapes, Warrenton, NC**
- <http://workinglandscapesnc.org/>
 - UNC GRI Research Cluster, "Building resilient regional food systems" project description, September 11, 2015.

IV: ANTHROPOCENE LANDSCAPES? GEOGRAPHY & TECHNO-SCIENCE STUDIES

12. Nov 8 Anthropocene or *Chthulucene*?
- DH, "1. Playing String Figures with Companion Species" "2. Tentacular Thinking: Anthropocene, Capitalocene, Chthulucene"
 - Nigel Clark, "Fiery Arts: Pyrotechnology and the political aesthetics of the Anthropocene" *GeoHumanities* 1(2015): 266-284.
 - Noel Castree, "Anthropocene and Planetary Boundaries" *The International Encyclopedia of Geography* DOI: 10.1002/9781118786352.wbieg0027
 - Kathryn Yusoff, "Anthropogenesis: Origins and endings in the Anthropocene" *Theory, Culture, & Society* 33(2016): 3-28.
 - Center for Culture, History and Environment, Nelson Institute, University of Wisconsin. "Objects" *The Anthropocene Slam: A Cabinet of Curiosities*, November 8-10, 2014.
<http://nelson.wisc.edu/che/anthroslam/objects/index.php>
13. Nov 15 Geoengineering
- DH, "3. Sympoiesis: Symbiogenesis and the Lively Arts of Staying with the Trouble"; "4. Making Kin: Anthropocene, Capitalocene, Plantationocene, Chthulucene"
 - Nigel Clark, "Geoengineering and geologic politics" *Environment and Planning A* 45(2013): 2825-2832.
 - Kathryn Yusoff, "The geoengine: geoengineering and the geopolitics of planetary modification" *Environment and Planning A* 45(2013): 2799-2808.
 - Nils Markusson *et al.*, "In case of emergency press here: framing geoengineering as a response to dangerous climate change" *WIREs Clim Change* 2013
 - Susan Millar and Don Mitchell, "The tight dialectic: The Anthropocene and the capitalist production of nature" *Antipode* (2015) doi: [10.1111/anti.12188](https://doi.org/10.1111/anti.12188).
14. Nov 22 Experiments in landscape
- DH, "5. Awash in urine: DES and Premarin in multi-species response-ability"; "6. Sowing worlds: a seed bag for terraforming with earth others"
 - Gregg Mitman, Introduction (1-9) and Ch. 2 "When pollen became poison" in *Breathing Spaces: How Allergies Shape our Lives and Landscapes* (New Haven: Yale University Press, 2007).
 - David Matless and Laura Cameron, "Experiment in landscape: The Norfolk excavations of Marietta Pallis" *Journal of Historical Geography* 32(2006): 96-126.
 - Ruth Olden, "Sludge" *Cultural Geographies* (2016) doi:10.1177/1474474016630966, 1-5.

15. Nov 29 Anthropocene soils
- DH, “7. A curious practice”; “8. The Camille stories: Children of compost”
 - Gregg Mitman, Ch. 4 “Choking cities” in *Breathing Spaces: How Allergies Shape our Lives and Landscapes* (New Haven: Yale University Press, 2007), 130-166.
 - Noel Castree, “Unfree radicals: Geoscientists, the Anthropocene, and left politics” *Antipode* (2015)
 - US DOE, Pacific Northwest National Laboratory, “Atomic Archaeology: The Manhattan Project’s Hanford Engineer Works Construction Camp Historic Landfill Study” (selections; related materials)
16. Dec 6 **Workshop #3:** student research/projects



**

* *Delivery of the Keys*, by Pietro Perugino (1482, Sistine Chapel).

***Landscape*, by Pablo Picasso (1908, La Rue-des-Bois)